

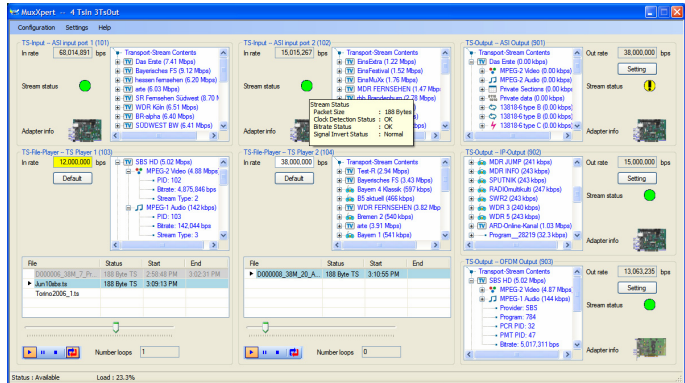


Real-Time Transport-Stream Multiplexer

- Real-time MPEG-2 (Re-)Multiplexing
- PSI and DVB-SI Generation and Insertion
- Integrated File Players

FEATURES

- Real-time multiplexing of live Transport Streams
- Two integrated file players for insertion of local content from disk
- Re-multiplexing of services and components from any input to any output
- Automatic PSI and DVB-SI extraction, re-generation and insertion
- Runs on a standard- or industrial PC with all DekTec input and output adapters
- Flexible configuration allows adaptation of PIDs, services, tables, descriptors, etc.
- User interface provides information about services, components and bitrates in the input and output Transport Streams



APPLICATIONS

- Master and Head-End (re-)multiplexing
- Local program insertion
- Generating Transport-Stream bouquets
- Creation of fully customized Transport Streams from files and live feeds

KEY ATTRIBUTES

Parameter	Value
Number of TS Inputs	0, 1...4 or 1...8*
Number of TS Outputs	1...4
Number of File Players	1...4
Sum of Input Rates	0...300 Mbit/s**
Sum of Output Rates	0...300 Mbit/s**

* Max. 8 without file players; 4 when one or two file players are used; 0 when three or four file players are used

** Valid for PCs that meet the recommended PC requirements

PC REQUIREMENTS

Platform	Windows-XP / 2003 with .NET v2.0
Processor	P4@3.0 Ghz* (recommended)
RAM	1 GB (recommended)

* Or equivalent AMD processor

ORDERING INFORMATION

Type	Description
DTC-700	MuxXpert MPEG-2 Multiplexer

Please refer to www.dektec.com for the latest pricing and a list of distributors and resellers

SUPPORTED DEKTEC I/O ADAPTERS

Type	Input(s)	Output(s)
DTA-100		1x DVB-ASI
DTA-102		1x DVB-SPI
DTA-105		2x DVB-ASI
DTA-107		1x DVB-S
DTA-110 (T) (-ISDB)		1x QAM, (DVB-T/H) (ISDB-T)
DTA-115 (-ISDB)		1x QAM, DVB-T/H (ISDB-T)
		1x DVB-ASI*
DTA-120	1x DVB-ASI	
DTA-122	1x DVB-SPI	
DTA-124	4x DVB-ASI	
DTA-140	1x DVB-ASI	1x DVB-ASI
DTA-145		2x DVB-ASI**
DTA-2145		2x DVB-ASI**
DTA-160		1x Gig-E*** 3x DVB-ASI*

* Each port can be used as Output or Input

** 2x Output, or 1x Input + 1x Output

*** The Gig-E can carry up to 8 TS Inputs and 4 TS Outputs